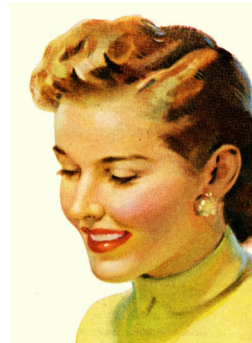
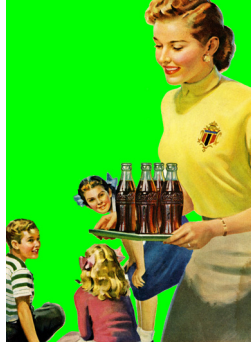


VEDIO ESSAY

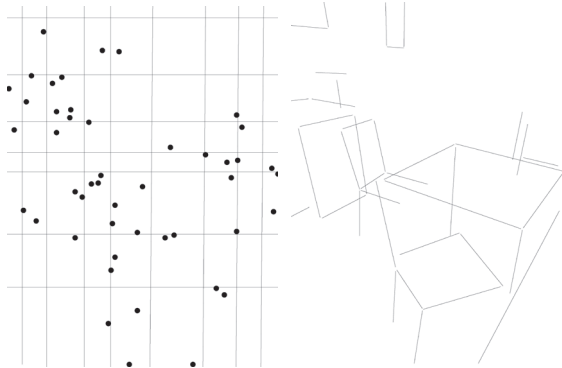
It is a ideal family picture.
 Mother is giving coca-cola to her kid
 Mom
 Giving
 Giving chips
 Giving cigarettes
 The image of mom
 The green mom
 The orange mom
 The black and white mom
 The shape of mom
 Mom
 Mom
 Mom
 Mom

Mom is symbol
 Mom is object
 Table is object
 Table is shape



This is a square table
 Square is four point and four line
 Table has 4 legs
 Elephant has 4 legs
 Table is elephant

3 Chairs
 A chair
 A image of chair
 A definition of chair
 Chair is symbol



Learning from still life

1647

Peach

Glass

Glass is glass

3



1880

Impressionism

Grape

Apple

Apple is colour

4



1920

Cubist

Bottle

Guitar

Guitar is shape

5



1962

Pop art

Soup cans

Soup cans is art work

Soup cans is food

Soup cans is symbol

Soup cans is andy- warhol

Table is elephant

Object is symbol

6



Object is shape
 Hiroshi sugimoto
 A surface of constant negative curvature obtained by
 twisting a pseudosphere
 Guggenheim museum
 Cone
 Eiffel tower



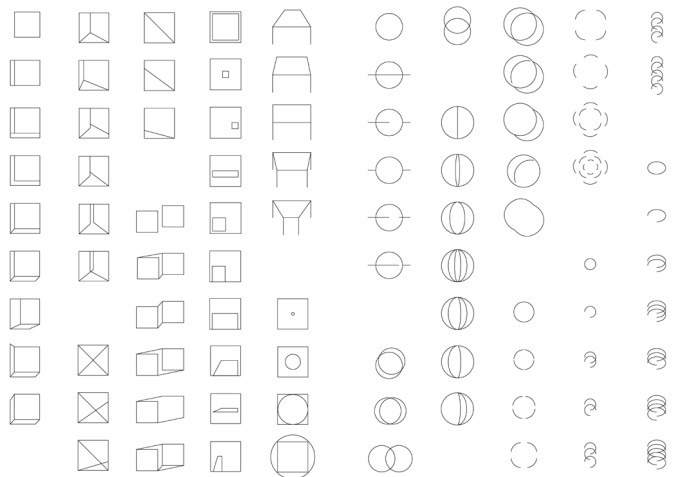
7



8



A shift in shape changes the meaning of a symbol

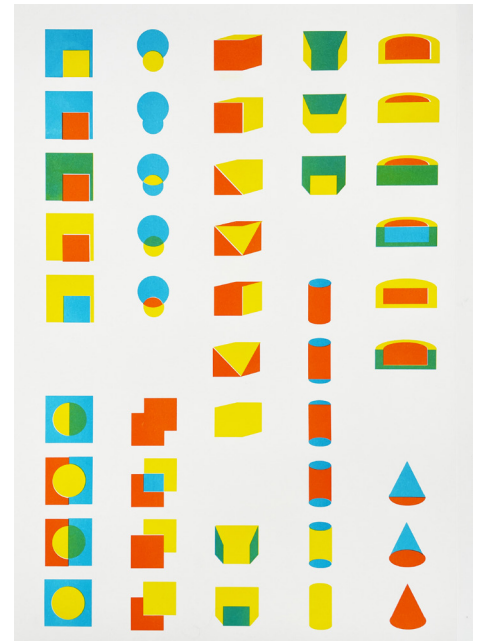


Object is symbol
 Marilyn monroe is symbol
 Face with colour and shape
 Face with black and white
 Face with gold and green
 Face with yellow and pink
 Object is symbol and colour

9

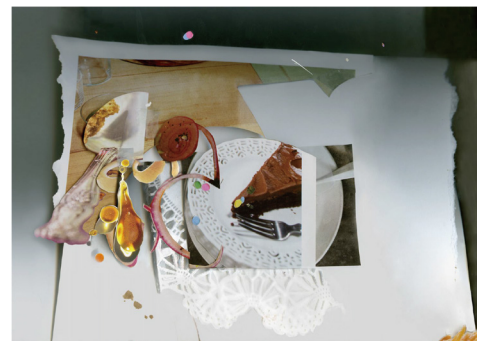


A shift in colour changes the meaning of the shape

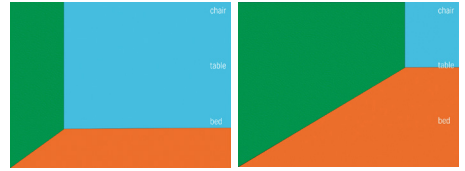


2010
 Laura letinsky
 Cake
 The image of cake
 The image of the image of cake
 Cake is triangle
 Plate is circle
 Circle
 Square
 Object is space

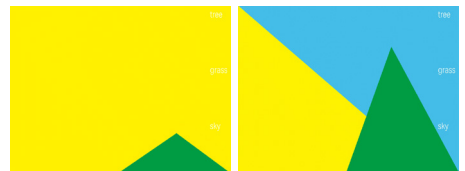
10



The image is the space defined by shape and colour
 A shift in space changes the our perspective
 A shift in space changes our position to the shape, to the symbol



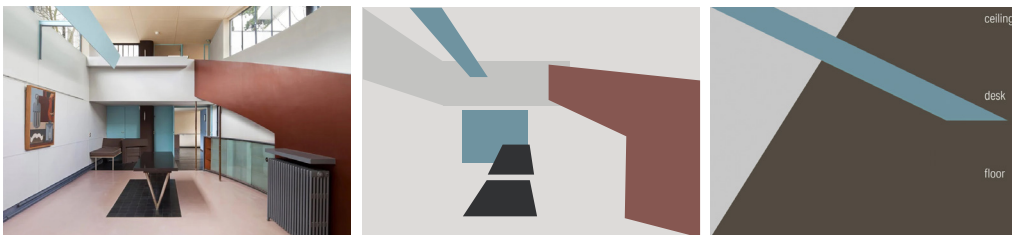
I stripped away all details, leaving only the sky, the earth, walls, pillars, trees, and grasslands. The tree is devoid of leaves, trunk, shape, or color. Even though you can discern a shape and color, you'll understand that these are not the tree's true attributes, even if i label it as 'tree'.



11

Rose is a rose is a rose.
 Gertrude stein once said, "the whole field of the canvas is important." In my perspective, the first rose is an object, the second rose represents the image of a rose, and the third rose, embodying the phrase 'a rose is a rose', is the concept of rose. It doesn't focus on the content of image, but shifts its focus from the image to the feeling, to the shape, to the symbol.

12



1

retrooldcommercials (2011) Coca Cola (Australian ad) 1960s. 12 January. Available at: <https://www.youtube.com/watch?v=Ylsq5AAKe7k> (Accessed: 24 May 2024).

2

Joseph Kosuth (1967). One and Three Chairs [Exhibition]. Available at: <https://www.moma.org/collection/works/81435> (Accessed: 24 May 2024).

3

Pieter Claesz. (1647). *Still life* [Oil on panel]. https://en.m.wikipedia.org/wiki/File:Pieter_Claesz._-_Still-life_-_WGA4968.jpg

4

Paul Cézanne. (1893). *The Basket of Apples* [Oil on canvas]. Art Institute of Chicago, Chicago. https://en.wikipedia.org/wiki/The_Basket_of_Apples

5

Le Corbusier (1920). *Still Life* [Oil on canvas]. Museum of Modern Art (MoMA), New York City, NY, US. <https://www.wikiart.org/en/le-corbusier/still-life-1920>

6

Andy Warhol. (1962). Campbell's Soup Cans [Synthetic polymer paint on canvas]. Museum of Modern Art, New York. https://en.wikipedia.org/wiki/Campbell%27s_Soup_Cans

7

Hiroshi sugimoto. *World Trade Center*. 1997.

8

Hiroshi sugimoto. *Dini's Surface: a surface of constant negative curvature obtained by twisting a pseudosphere*. 2004.

9

Andy Warhol. Marilyn Monroe [Portfolio of ten screenprints]. New York: Factory Additions; 1967. Composition and sheet (each): 36 x 36" (91.5 x 91.5 cm).

10

Laura Letinsky. *Untitled #7, Albeit series*. [Chromogenic print]. 2010. Photograph: 21 1.7" x 8.5" .

11

Gertrude Stein, "*Sacred Emily*", in *Geography and Play*, ed. by Catharine R. Stimpson and Harriet Chessman (Boston: Four Seas Co., 1922), pp. 178-188

12

Le Corbusier. *Villa La Roche*(1923-25)[Architecture].